

NO.8

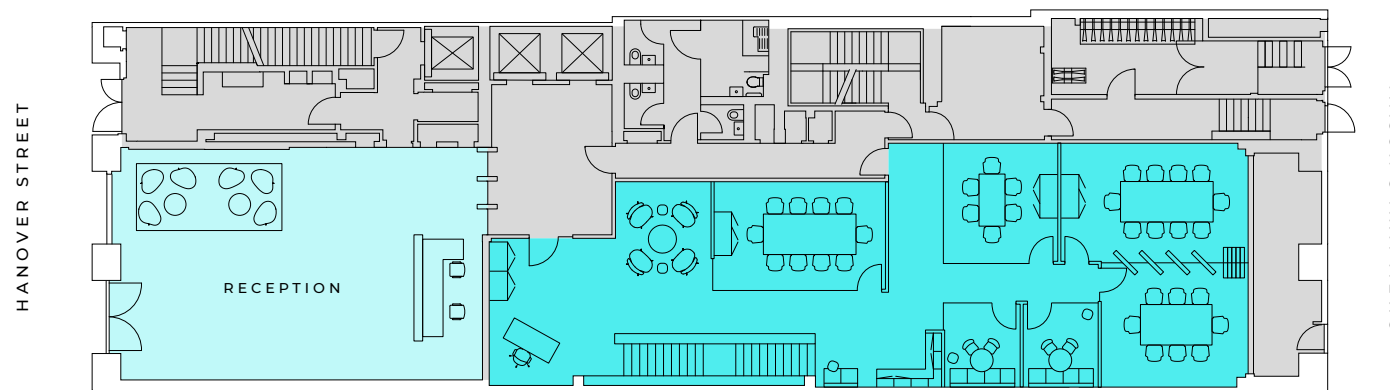
Option One

5,094 SQ FT (473 SQ M)

GROUND

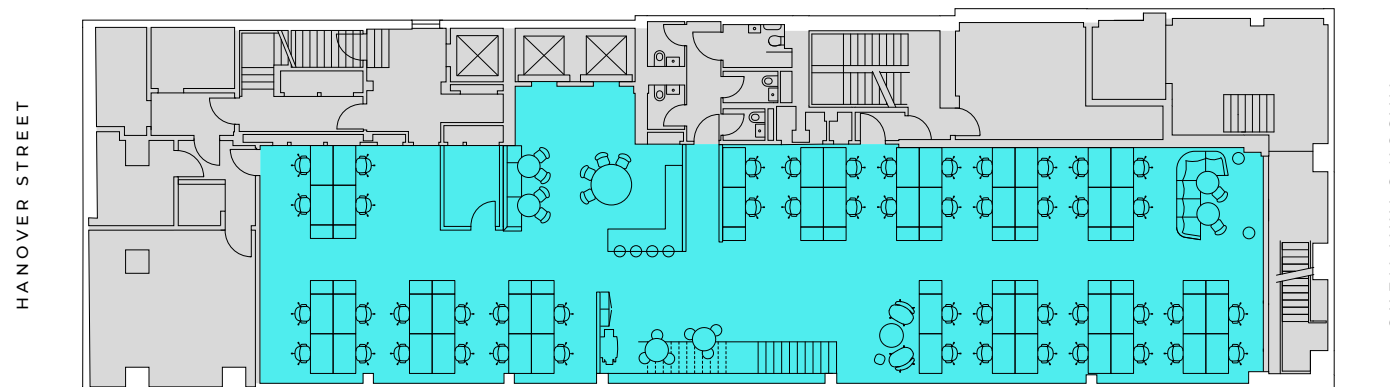
1,896 SQ FT (176.1 SQ M)

SPACE OCCUPANCY	HEADCOUNT
Workstations	48
x1 Reception	1
x2 Meeting room (10 persons)	20
x1 Meeting room (8 persons)	8
x1 Meeting room (6 persons)	6
x2 Soft seating (Ground)	6
x1 Teapoint (small)	
x1 Teapoint	12
x3 Breakout seating (Lower G)	14
x1 Print	
x1 Comms	



LOWER GROUND

3,198 SQ FT (297.1 SQ M)



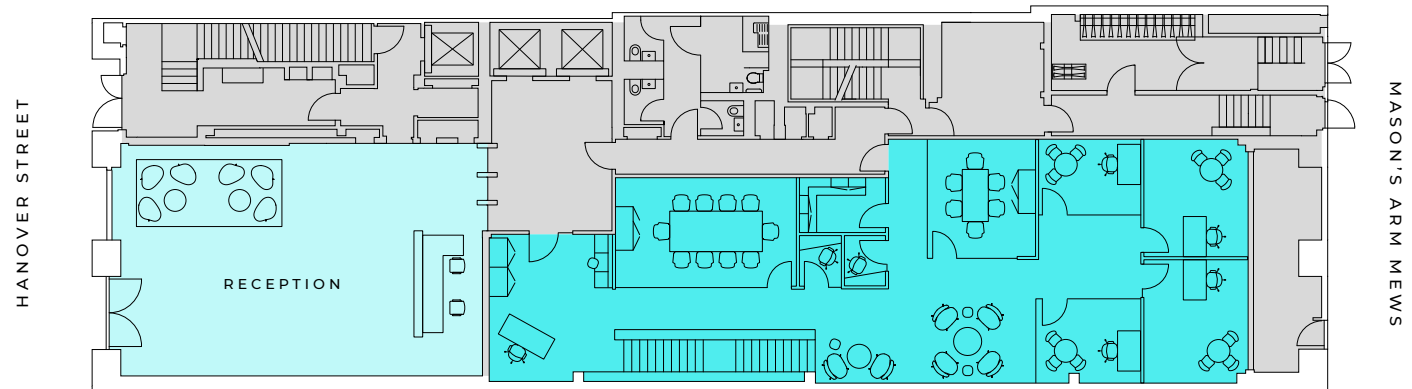
NO.8

Option Two

5,094 SQ FT (473 SQ M)

GROUND

1,896 SQ FT (176.1 SQ M)



HANOVER STREET

MASON'S ARM MEWS

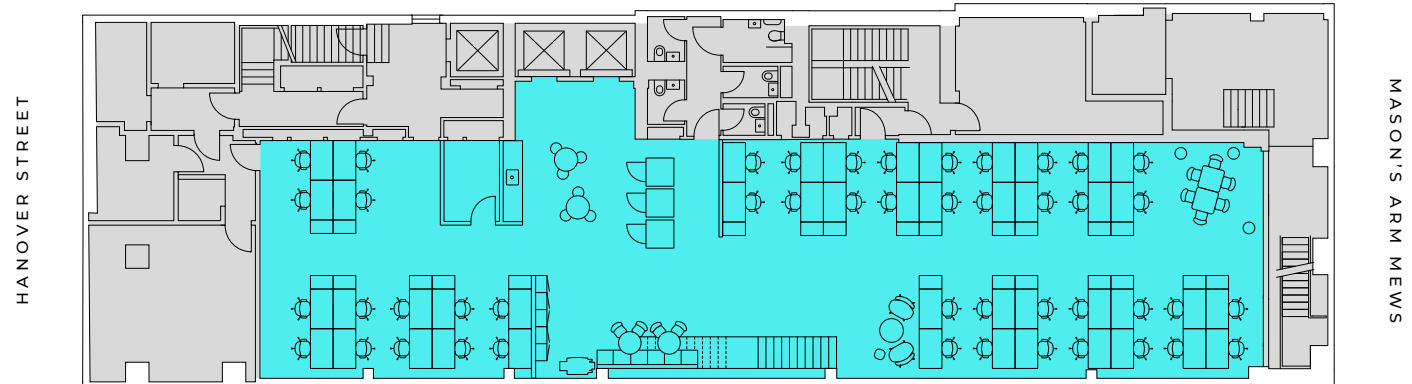
SPACE OCCUPANCY	HEADCOUNT
Workstations	46
Office	4
Total	50

x1 Reception	1
x1 Meeting room (10 persons)	10
x1 Meeting room (6 persons)	6
x3 Soft seating (Ground)	8
x3 Breakout seating (Lower G)	16
x2 Phone rooms	2
x1 Pantry	1

x1 Teapoint	6
x3 Phone pod (furn)	3
x1 Print	
x1 Comms	

LOWER GROUND

3,198 SQ FT (297.1 SQ M)



HANOVER STREET

MASON'S ARM MEWS